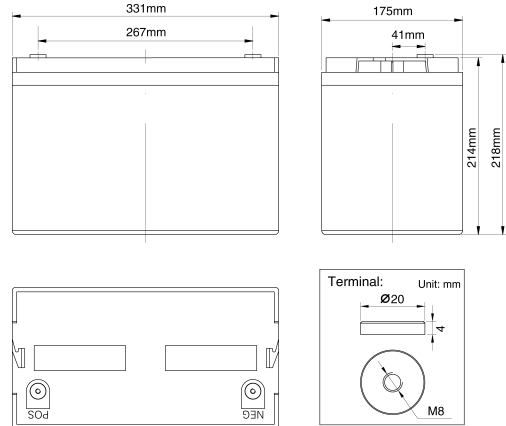


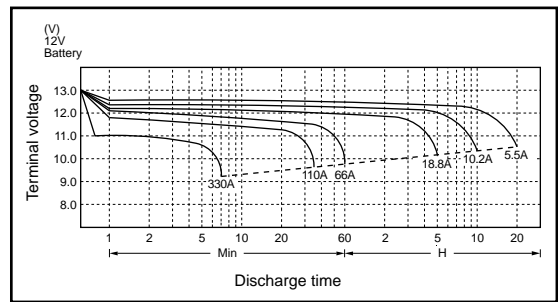
HL110-12B



Specifications

Nominal Voltage		12V
Rated Capacity(20 hour rate)		110AH
Dimension	Total Height (with terminals)	218mm(8.58inches)
	Height	214mm(8.43inches)
	Length	331mm(13.03inches)
	Width	175mm(6.89inches)
Weight		Approx.35.0kg(77.16lbs)

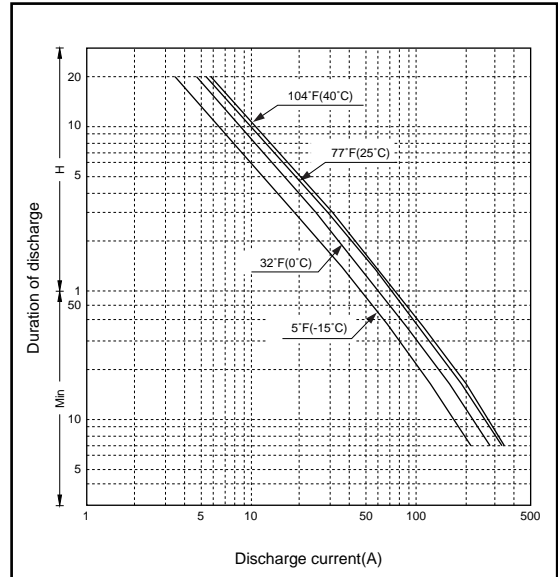
Discharge characteristics 77°F(25°C)



Characteristics

Capacity 77°F(25°C)	20 hour rate(5.5A)	110AH
	10 hour rate(10.2A)	102.3AH
	5 hour rate(18.8A)	94AH
	1 hour rate(66A)	66AH
Internal Resistance	Full charged Battery 77°F(25°C)	4mΩ
Capacity affected by Temperature (20 hour rate)	104°F(40°C)	102%
	77°F(25°C)	100%
	32°F(0°C)	85%
	5°F(-15°C)	65%
Self-Discharge 77°F(25°C)	Capacity after 3 month storage	88%
	Capacity after 6 month storage	76%
	Capacity after 12 month storage	53%
Max. Discharge Current 77°F(25°C)	1650A(5S)	
Terminal	Standard	F17
	Optional	F11
Charging (Constant Voltage)	Cycle	Initial Charging Current 22A Or Small 14.5V~14.9V/77°F(25°C)
	Float	13.6V~13.8V/77°F(25°C)

Duration of discharge vs. Discharge current



Note The above data are average values, and can be obtained within 3 charge/discharge cycles. These are not minimum values.

Constant Power Discharge Watts Per Cell @ 77°F(25°C)

End Point Volt/cell	Operation Time To End Point Voltage								
	5min	10min	15min	20min	30min	40min	50min	60min	90min
1.75	543	405	332	284	219	179	152	132	96.0
1.70	575	432	348	292	225	184	155	133	97.0
1.67	602	453	359	300	228	186	157	135	98.8
1.65	608	458	364	302	229	187	158	136	99.8
1.60	631	470	375	311	233	190	160	137	101

Constant Current Discharge Rating Amperes @ 77°F(25°C)

End Point Volt/cell	Operation Time To End Point Voltage													
	5min	10min	30min	60min	2hr	3hr	4hr	5hr	6hr	7hr	8hr	10hr	20hr	24hr
1.75	292	177	115	66.0	37.6	27.5	21.6	18.8	15.4	13.5	12.0	10.2	5.50	4.61
1.80	258	165	109	63.8	35.8	26.6	20.9	18.3	15.0	13.1	11.8	9.98	5.38	4.51
1.85	216	147	100	59.0	34.5	25.1	19.8	17.4	14.2	12.4	11.1	9.65	5.13	4.31
1.90	165	120	82.4	50.4	31.8	23.1	18.5	16.2	13.2	11.6	10.5	9.18	4.78	4.02